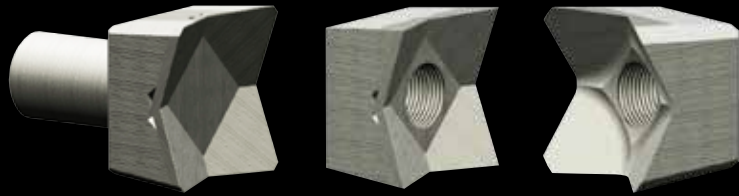


QUAD TOOTH® SYSTEM POCKET GUIDE

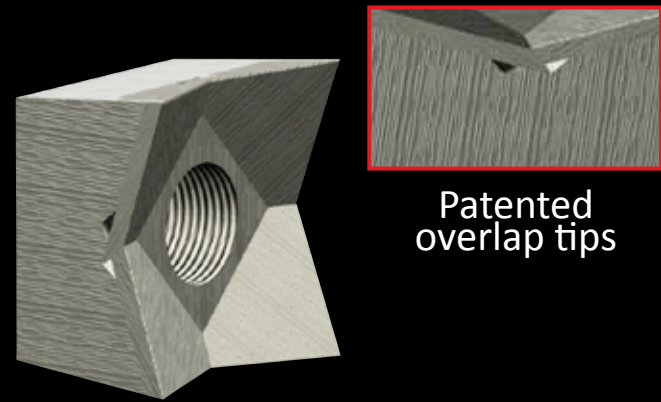


CARBIDE & STEEL TEETH

QUADCO saw teeth have become the industry standard around the world, even more so with our NO-SHANK and SHANKLESS models. By changing only the tooth crown rather than the complete tooth, the Shankless two-piece teeth will significantly reduce your operating costs.

CARBIDE TIP TEETH

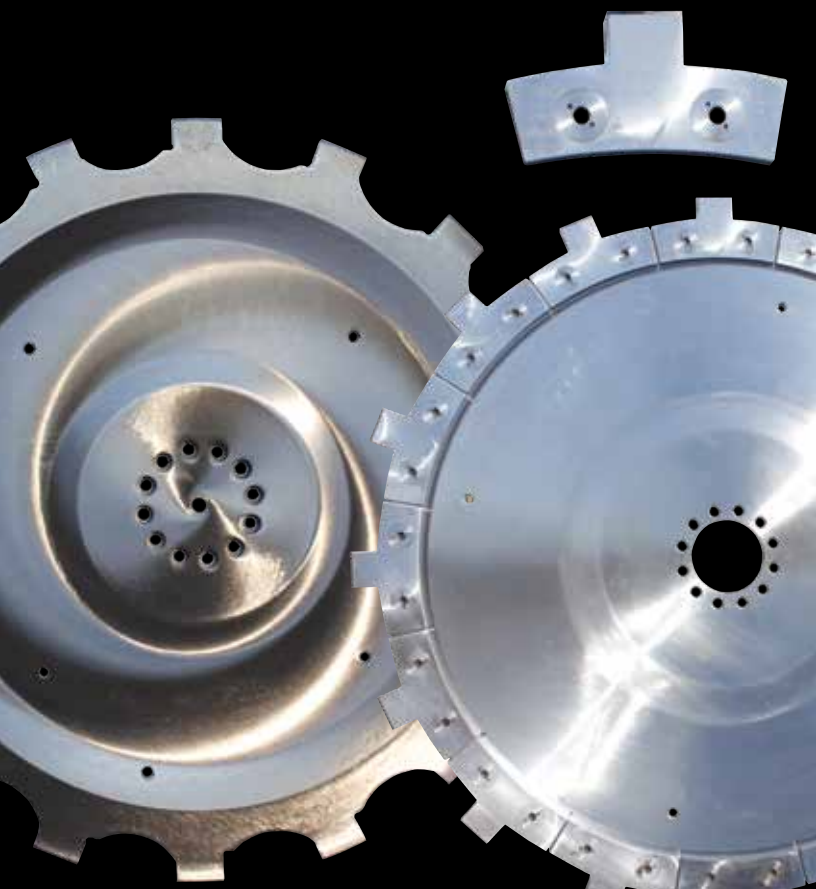
Longer lasting Carbide teeth have patented overlapping design to prevent blow-by and erosion of the teeth and the disc.



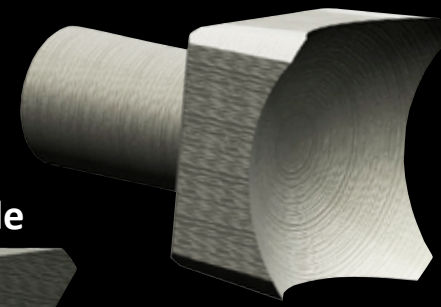
Patented overlap tips

STEEL - HEAT TREATED TEETH

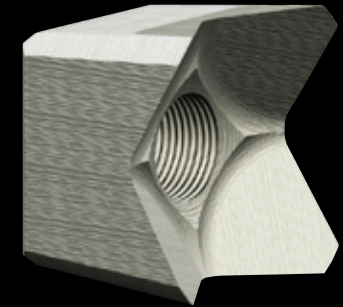
Steel teeth are heat treated to the highest Rockwell rating on the market without compromising impact resistance. The Beaver style has straight edges to maintain a more efficient cutting edge longer.



CONCAVE style

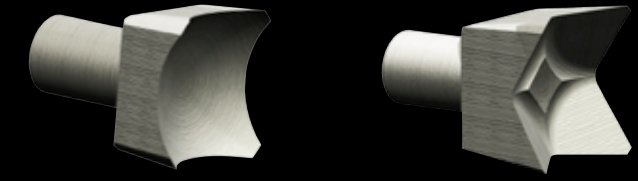


BEAVER style

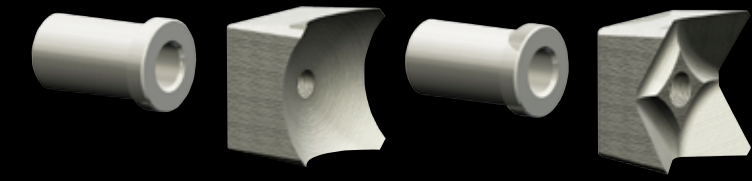


REGULAR & SHANKLESS TEETH

Regular



Shankless

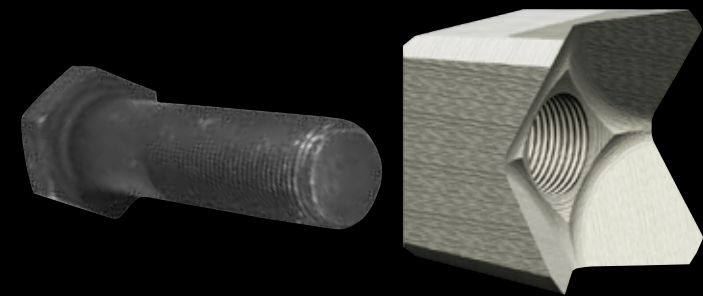


Teeth with Long Shanks Teeth with Short Shanks

NO-SHANK TOOTH

SAVE EVEN MORE and LOWER WASTE

By replacing the shank arrangement with a large bolt, the result is a simpler tooth with little waste of material and more savings.



DISC HOLDER ASSEMBLY - Shown with 2-piece tooth



REVERSIBLE TOOTH HOLDER



- Fully symmetrical so the tooth can be mounted on either side allowing the holder to be reversed
- Will double the life of the holder
- Will lower overall operating cost

FORESTRY SAW QUAD TOOTH® SYSTEM

SAW TEETH

While maintaining the highest standards for cutting tools in the industry, QUADCO's saw teeth are suited for all applications, even in the toughest conditions.

From design to testing, we've proven the most efficient cut is through a single set of tips with the proper amount of relief angle. Anything more, is simply dragging the saw disc down.

SAW DISCS

Our saw discs are engineered for logger's ever-demanding needs. Our patented, segmented discs protect the disc with replaceable tooth holders making them ideal for high-impact applications. Our one-piece discs are designed for use in abrasive conditions and are the best in the industry, but can also be used in high impact conditions if required. They are even better with our latest revolutionary, patent pending, deep gullet design for a more efficient cut.

Check out our Facebook page for more info and promotions.
www.facebook.com/quadco



QUADCO

800.668.3340 www.quadco.com

QUADCO sets the standard in forestry teeth and attachments and is a pioneer in the industry. Contact us for more information on these and our other products.

SAW TOOTH GUIDE

Part No	Description	Kerf	Shank Length	Shank Diameter	Bolt Size
NO SHANK TEETH					
NO SHANK Concave					
QH10110T	QUAD TOOTH NO SHANK	2"	N/A	N/A	3/4"NF
Q10205T	QUAD TOOTH NO SHANK	2-1/4"	N/A	N/A	1"NF
NO SHANK Beaver					
QH10103T	QUAD TOOTH NO SHANK	2"	N/A	N/A	3/4"NF
Q10133T	QUAD TOOTH NO SHANK	2-1/4"	N/A	N/A	1"NF
Q10233T	QUAD TOOTH NO SHANK	2-5/16"	N/A	N/A	1"NF
Q11333T	QUAD TOOTH NO SHANK	2-7/16"	N/A	N/A	1"NF
NO SHANK Carbide					
QVH4X4NSB-G1	QUAD BEAVER TIP NO SHANK	1-7/8"	N/A	N/A	3/4"NF
QV4X4NS-G1	QUAD SHARP TIP NO SHANK	2-1/4"	N/A	N/A	1"NF
QV4X4NSB-G1	QUAD BEAVER TIP NO SHANK	2-1/4"	N/A	N/A	1"NF

TWO-PIECE TEETH

TWO-PIECE Concave					
QH10120T	QUAD TOOTH SHANKLESS	2"	3/4",1-1/2"	1"	1/2"NF
<i>Shank Options QH10067T-3/4" Short ; QH10068T 1-1/2" Long</i>					
Q10105T	QUAD TOOTH SHANKLESS	2-1/4"	.938", 2"	1-1/4"	1/2"NF
<i>Shank Options Q10106T - .938" Short ; Q10117T 2" Long</i>					
QK10022T	QUAD TOOTH SHANKLESS	2-3/8"	2"	1.234"	5/8"NF
<i>Shank Option QK10023T - 2" Long</i>					
M1M203T	QUAD TOOTH SHANKLESS	2"	2-1/2"	N/A	5/8"NF
<i>Holder Option M1HBF200 - 2-1/2"</i>					
M1M205T	QUAD TOOTH SHANKLESS	2-5/16"	N/A	3/4"	3/4" 10NC
<i>Holder Option M1HBF2516 - 3-1/4"</i>					
TWO-PIECE Beaver					
QH10096T	QUAD TOOTH SHANKLESS	2"	3/4", 1-1/2"	1"	1/2"NF
<i>Shank Options QH10067T-3/4" Short ; QH10068T 1-1/2" Long</i>					
Q10094T	QUAD TOOTH SHANKLESS CROSS BACK	2-1/4"	.938"	1-1/4"	1/2"NF
<i>Shank Option Q10093T - .938" Short</i>					
Q10136T	QUAD TOOTH SHANKLESS	2-1/4"	.938", 2"	1-1/4"	1/2"NF
<i>Shank Options Q10106T - .938" Short ; Q10117T 2" Long</i>					
QK10031T	QUAD TOOTH SHANKLESS	2-3/8"	2"	1.234"	5/8"NF
<i>Shank Option QK10023T - 2" Long</i>					
M1M233T	QUAD TOOTH SHANKLESS	2"	2-1/2"	1-1/4"	5/8"NF
<i>Holder Option M1HBF200 - 2-1/2"</i>					
TWO-PIECE Carbide					
QVK4X4CB-G1	QUAD TOOTH SHANKLESS BEAVER				
<i>Shank Option QK10023T - 2" Long</i>					

ONE-PIECE TEETH

ONE-PIECE Concave					
QK10012T	QUAD TOOTH SHORT SHANK	1-1/8"	0.38"	0.62"	3/8"NF
Q10001T	QUAD TOOTH SHORT SHANK	2-1/4"	0.938"	1-1/4"	1/2"NF
QH10091T	QUAD TOOTH LONG SHANK	1-7/8"	1-3/4"	1"	1/2"NF
QH10062T	QUAD TOOTH LONG SHANK	2"	1-1/2"	1"	1/2"NF
Q10121T	QUAD TOOTH SHORT SHANK	1-3/8"	.1"	1"	3/8"NF
Q10097T	QUAD TOOTH LONG SHANK	2-1/4"	2"	1-1/4"	1/2"NF
Q10098T	QUAD TOOTH LONG SHANK	2-1/4"	2"	1-1/4"	5/8"NF
MIK404T	QUAD TOOTH LONG SHANK	2-5/16"	2"	1.234"	5/8"NF
ONE-PIECE Beaver					
QH10150T	QUAD TOOTH LONG SHANK	2"	1-1/2"	1"	1/2"NF
QH10078T	QUAD TOOTH SHORT SHANK	2"	3/4"	1"	1/2"NF
QH10098T	QUAD TOOTH LONG SHANK	2-1/8"	1-1/2"	1"	1/2"NF
Q10797T	QUAD TOOTH SHORT SHANK	1-3/4"	.1"	1"	1/2"NF
Q10635T	QUAD TOOTH SHORT SHANK	1-3/4"	.1"	1"	3/8"NF
Q10206T	QUAD TOOTH SHORT SHANK	1-3/8"	.1"	1"	3/8"NF
Q10150T	QUAD TOOTH SHORT SHANK	2-1/4"	0.938"	1-1/4"	1/2"NF
Q10122T	QUAD TOOTH LONG SHANK	2-1/4"	2"	1-1/4"	1/2"NF
Q10126T	QUAD TOOTH LONG SHANK	2-1/4"	2"	1-1/4"	5/8"NF
QK10024T	QUAD TOOTH LONG SHANK	2-3/8"	2"	1.234"	5/8"NF
ONE-PIECE Carbide					
QVH4X4-1B-G1	QUAD BEAVER TOOTH LONG SHANK	1-7/8"	1-1/2"	1"	1/2"NF
QV4X4B-G1	QUAD BEAVER TOOTH LONG SHANK	2-1/4"	0.938"	1-1/4"	1/2"NF
QVK4X4B-G1	QUAD BEAVER TOOTH LONG SHANK	2-3/8"	2"	1.234"	5/8"NF

SAW DISC GUIDE

CUSTOM SAW DISCS DESIGNED FOR ALL APPLICATION MAKES AND MODELS

ONE-PIECE SAW DISCS

Made with the best steel and design features available for the strongest saw disc; optional integrated bolting-flange; sizes available for all saw head makes and models. For best results, demand **QUADCO G1 carbide teeth**!



NEW - Deep Gullet Disc

FEATURES & BENEFITS

- Deep gullet design - (Patent pending) Larger chip pocket reduces resistance on the disc and teeth allowing it to cut through trees faster providing quicker load cycles
- Pocket is designed to allow chips to exit the tooth in a smooth flow without being forced past the tooth and holder, therefore decreasing disc and tooth wear
- Optimum tooth holder design and angle reduces load per tooth while promoting maximum disc and tooth life
- 4000 hour warranty pro-rated



Standard Disc

FEATURES & BENEFITS

- Optimum tooth holder design and angle reduces load per tooth while promoting maximum disc and tooth life
- 4000 hour warranty pro-rated

Use sleeves for corresponding holder dimension A

SIZE	SLEEVES
1"	QH10015 and QH10016
1-1/4"	QH10197 and QH10198
1-1/2"	Q10014 and Q10015

SEGMENTED SAW DISCS



Two-Leg Full Cover - Reversible

Symmetrical design to allow tooth to be mounted on either side, which means the life of the holder can be doubled. In case of impact damage or sand wear, the tooth holder can be turned and reinstalled with proper precautions. Also, the saw disc rotation can be changed with a few simple steps.



Two-Leg Full Cover - QUADCO's standard disc

This saw disc offers the highest torque rating in the industry, a 20% increase over previous models. Its highly aerodynamic design features 25% more efficiency than previous models and the increased perimeter coverage makes it ideal for abrasive conditions. A Well-proven modular concept includes replaceable tooth holders. Has a 1 1/8" thick disc center for maximum disc life.



Wide Kerf Two-Leg Heavy Duty

This 1" or 1 1/8" saw disc and tooth holder combination is most commonly used where the disc is subject to high-energy impacts. This design is one of Quadco's strongest, intended for heavy duty harvesting applications. All 2 1/4" kerf teeth adapt to this disc family.



Narrow Kerf Two-Leg Regular

This lightweight 1 1/8" thick saw disc with its narrow kerf (2" and less), requires less energy and makes this disc highly efficient for its intended thinning applications.

- Retrofit kits available for all QUADCO disc systems
- All Two-leg discs available in both shank and no-shank holder styles

TOOTH HOLDER GUIDE

HOLDER	DIM A	DIM B	DIM C	DIM D	DIM E	DIM F
Q10165	1"	3.500"	7/8"	3/4"	3/4"	7.47"
QH10248	1-1/4"	3-1/2"	7/8"	3/4"	3/4"	7.087"
QH10234	1-1/4"	3-1/2"	7/8"	3/4"	3/4"	7.517"
Q10176	1-1/2"	4.827"	1"	1"	1"	10.22"
Q10330	1-1/2"	4.827"	1"	1"	1"	9.728"
Q10899	1-1/2"	4.827"	1"	1"	1"	9.142"
Q10177	1"	3-1/2"	7/8"	3/4"	3/4"	7.47"
Q10163	1"	3-1/2"	7/8"	1"	1/2"	7.47"
Q10195	1"	3-1/2"	7/8"	1"	1/2"	8.19"
Q10134	1-1/2"	4.827"	1"	1"	1"	10.22"
Q10141	1-1/2"	4.827"	1-1/8"	1"	1"	10.22"
Q10174	1-1/2"	4.827"	1"	1"	1"	8.18"
Q10142	1-1/2"	4.827"	1"	1-1/4"	1/2"	10.22"

*Products, specifications and information are subject to change without notice.